

This clamp represents the latest stage in the evolution of the ASFA 12 mm range. One of the main developments in this version is the lateral displacement of the band thread, which reduces the tendency of the band end to exit the housing off-centre when tightened.

Thanks to the combination of the housing, the locking system and the location of the screw within the housing, this clamp offers superior performance at the same torque ratings.

Specially recommended for industrial applications.

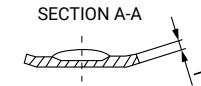
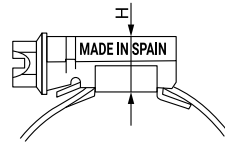
DIN 3017. The ASFA S hose clip complies fully with the DIN 3017 norm and also with the directive EU 2002/95/EC.

* The maximum application pressure can vary depending on the type of hose used and the geometry of the coupling.

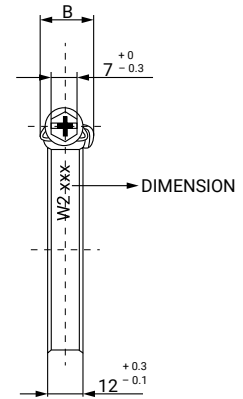
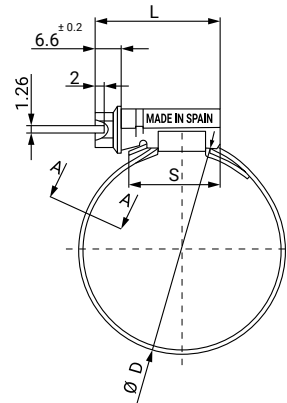
MATERIAL: Band and support: W2
Stainless steel X6Cr17
DIN 1.4016 AISI 430
Bolt: Steel Qst 36-3
DIN 1.0214

FINISH: Bolt: Zinc plated Cr3
CORROSION RESISTANCE: 72 hours salt spray
(ASTM B-117)

Ø Application mm	Part Number	L +1-0.5	T ±0.1	H Max.	B Max.	S Min.	Max. Pressure Bar	Box Quantity	Outer Box Quantity
16-27	03017017	29,6	0,85	11	16,7	19,5	45	50	400
20-32	03017025	29,6	0,85	11	16,7	19,5	45	50	400
25-40	03017033	29,6	0,85	11	16,7	19,5	40	50	400
30-45	03017009	29,6	0,85	11	16,7	19,5	35	50	400
32-50	03017041	29,6	0,85	11	16,7	19,5	35	50	200
40-60	03017050	29,6	0,85	11	16,7	19,5	30	50	400
50-70	03017068	29,6	0,85	11	16,7	19,5	25	50	400
60-80	03017076	29,6	0,85	11	16,7	19,5	20	50	50
70-90	03017084	29,6	0,85	11	16,7	19,5	17	50	50
80-100	03017092	29,6	0,85	11	16,7	19,5	14	25	200
90-110	03017105	29,6	0,85	11	16,7	19,5	12	25	200
100-120	03017113	29,6	0,85	11	16,7	19,5	10	25	200



ASYMETRIC STAMPING



Ø Application mm	Part Number	L +1-0.5	T ±0.1	H Max.	B Max.	S Min.	Max. Pressure Bar	Box Quantity	Outer Box Quantity
110-130	03017121	29,6	0,85	11	16,7	19,5	8	25	25
120-140	03017130	29,6	0,85	11	16,7	19,5	7	25	25
130-150	03017148	31,6	0,85	11	16,7	21,5	6	25	25
140-160	03017156	31,6	0,85	11	16,7	21,5	5	25	25
150-170	03017164	31,6	0,85	11	16,7	21,5	4	25	25
160-180	03017172	31,6	0,85	11	16,7	21,5	3	25	25
170-190	03017180	31,6	0,85	11	16,7	21,5	2	10	10
180-200	03017199	31,6	0,85	11	16,7	21,5	2	10	10
190-210	03017201	31,6	0,85	11	16,7	21,5	1,8	10	10
200-220	03017210	31,6	0,85	v	16,7	21,5	1,8	10	10
210-230	03017228	31,6	0,85	11	16,7	21,5	1,6	10	10
220-240	03017236	31,6	0,85	11	16,7	21,5	1,6	10	10
230-250	03017245	31,6	0,85	11	16,7	21,5	1,6	10	10
240-260	03017253	31,6	0,85	11	16,7	21,5	1,6	10	10
250-270	03017261	31,6	0,85	11	16,7	21,5	1,6	10	10
260-280	03017278	31,6	0,85	11	16,7	21,5	1,6	10	10
270-290	03017288	31,6	0,85	11	16,7	21,5	1,6	10	10
280-300	03017296	31,6	0,85	11	16,7	21,5	1,6	10	10
290-310	03017309	31,6	0,85	11	16,7	21,5	1,6	10	10